

# Schematics for the DIY ProPo Servo Amp. by Mike\_K

## Arduino Pro Mini 328P 16 MHz 5V – Pololu DRV8838 Motor Drive Bridge setup

### Connections:

#### Pro Mini – DRV8838 - Rx

D3 – Enable

D4 – Phase

D6 – – ppm

GND – GND & GND – Rx Black

VCC/5V – VCC & VIN – Rx Red

#### DRV8838 – Servo

OUT1 & OUT2 Connects to servo motor

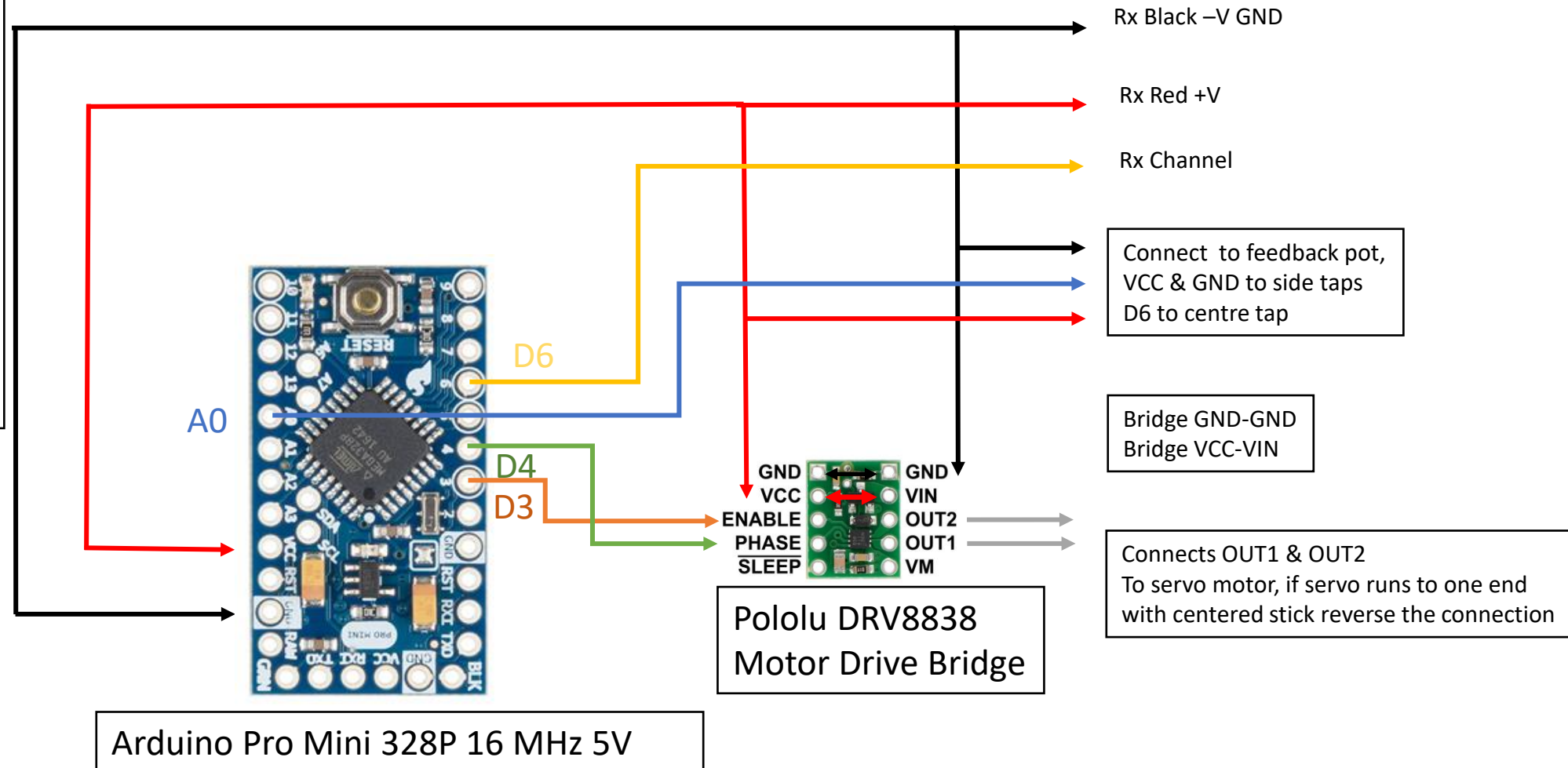
#### Pro Mini – Servo

Feedback Pot

A0 – Centre tap

VCC – Side tap

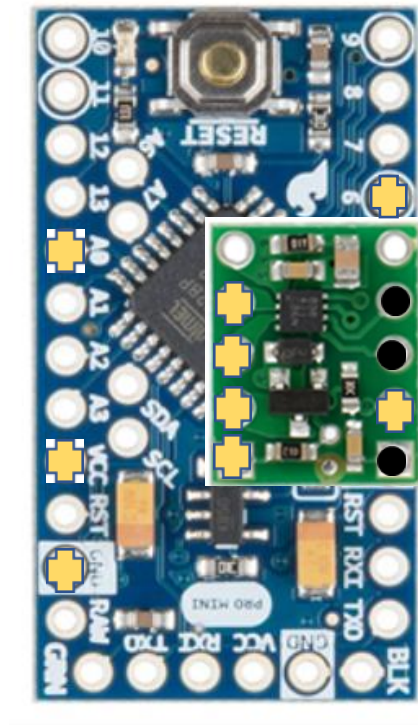
GND – Side tap



A0 – Centre tap pot

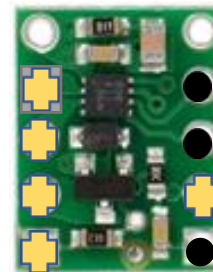
VCC

GND



D6 – Rx - ppm

OUT1  
OUT2  
VIN  
GND



PH – D4  
EN – D3  
VCC  
GND - GND

● Thru pin headers

✚ Wire Connections